

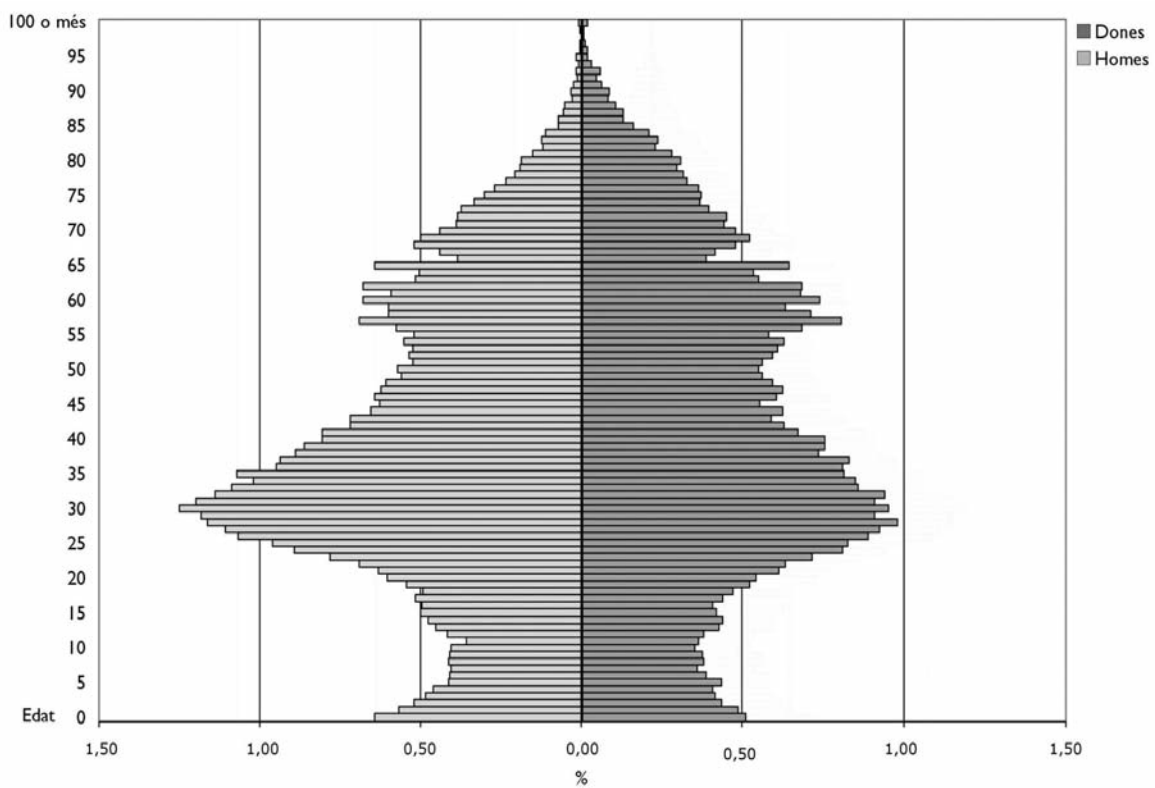
I. POBLACIÓ ■ I.2 Estructura de la població segons el sexe i l'edat

I.T5 Població per sexe i edat. Ciutat

| Edat | Sexe | | Total | Edat | Sexe | | Total |
|------|-------|-------|-------|-----------|--------|--------|---------|
| | Homes | Dones | | | Homes | Dones | |
| 0 | 774 | 616 | 1.390 | 51 | 635 | 678 | 1.313 |
| 1 | 683 | 590 | 1.273 | 52 | 648 | 719 | 1.367 |
| 2 | 630 | 528 | 1.158 | 53 | 632 | 736 | 1.368 |
| 3 | 585 | 500 | 1.085 | 54 | 667 | 758 | 1.425 |
| 4 | 554 | 493 | 1.047 | 55 | 630 | 704 | 1.334 |
| 5 | 501 | 528 | 1.029 | 56 | 697 | 827 | 1.524 |
| 6 | 494 | 468 | 962 | 57 | 834 | 976 | 1.810 |
| 7 | 488 | 435 | 923 | 58 | 726 | 863 | 1.589 |
| 8 | 497 | 460 | 957 | 59 | 725 | 767 | 1.492 |
| 9 | 495 | 456 | 951 | 60 | 821 | 893 | 1.714 |
| 10 | 488 | 423 | 911 | 61 | 712 | 823 | 1.535 |
| 11 | 433 | 441 | 874 | 62 | 820 | 829 | 1.649 |
| 12 | 502 | 461 | 963 | 63 | 625 | 665 | 1.290 |
| 13 | 546 | 518 | 1.064 | 64 | 609 | 646 | 1.255 |
| 14 | 574 | 530 | 1.104 | 65 | 778 | 781 | 1.559 |
| 15 | 606 | 508 | 1.114 | 66 | 466 | 470 | 936 |
| 16 | 600 | 492 | 1.092 | 67 | 531 | 503 | 1.034 |
| 17 | 621 | 531 | 1.152 | 68 | 627 | 577 | 1.204 |
| 18 | 593 | 571 | 1.164 | 69 | 606 | 632 | 1.238 |
| 19 | 659 | 629 | 1.288 | 70 | 530 | 580 | 1.110 |
| 20 | 727 | 656 | 1.383 | 71 | 468 | 536 | 1.004 |
| 21 | 763 | 740 | 1.503 | 72 | 466 | 544 | 1.010 |
| 22 | 834 | 766 | 1.600 | 73 | 453 | 478 | 931 |
| 23 | 946 | 866 | 1.812 | 74 | 403 | 445 | 848 |
| 24 | 1.077 | 981 | 2.058 | 75 | 367 | 449 | 816 |
| 25 | 1.158 | 1.001 | 2.159 | 76 | 326 | 438 | 764 |
| 26 | 1.289 | 1.074 | 2.363 | 77 | 282 | 397 | 679 |
| 27 | 1.337 | 1.120 | 2.457 | 78 | 250 | 383 | 633 |
| 28 | 1.405 | 1.185 | 2.590 | 79 | 232 | 360 | 592 |
| 29 | 1.429 | 1.102 | 2.531 | 80 | 227 | 373 | 600 |
| 30 | 1.511 | 1.153 | 2.664 | 81 | 181 | 339 | 520 |
| 31 | 1.447 | 1.101 | 2.548 | 82 | 146 | 279 | 425 |
| 32 | 1.373 | 1.137 | 2.510 | 83 | 150 | 287 | 437 |
| 33 | 1.313 | 1.040 | 2.353 | 84 | 133 | 251 | 384 |
| 34 | 1.232 | 1.028 | 2.260 | 85 | 85 | 196 | 281 |
| 35 | 1.293 | 983 | 2.276 | 86 | 85 | 156 | 241 |
| 36 | 1.144 | 981 | 2.125 | 87 | 70 | 156 | 226 |
| 37 | 1.132 | 1.003 | 2.135 | 88 | 63 | 128 | 191 |
| 38 | 1.072 | 891 | 1.963 | 89 | 36 | 101 | 137 |
| 39 | 1.038 | 913 | 1.951 | 90 | 38 | 103 | 141 |
| 40 | 973 | 913 | 1.886 | 91 | 29 | 77 | 106 |
| 41 | 973 | 815 | 1.788 | 92 | 15 | 59 | 74 |
| 42 | 867 | 762 | 1.629 | 93 | 21 | 70 | 91 |
| 43 | 868 | 713 | 1.581 | 94 | 11 | 37 | 48 |
| 44 | 792 | 756 | 1.548 | 95 | 18 | 25 | 43 |
| 45 | 759 | 670 | 1.429 | 96 | 5 | 23 | 28 |
| 46 | 777 | 730 | 1.507 | 97 | 6 | 12 | 18 |
| 47 | 752 | 756 | 1.508 | 98 | 2 | 7 | 9 |
| 48 | 733 | 715 | 1.448 | 99 | 4 | 7 | 11 |
| 49 | 678 | 680 | 1.358 | 100 o més | 9 | 24 | 33 |
| 50 | 690 | 664 | 1.354 | Total | 61.605 | 59.240 | 120.845 |



I.GI Piràmide de població. Ciutat



I.T6 Població per sexe i edat. Districte I

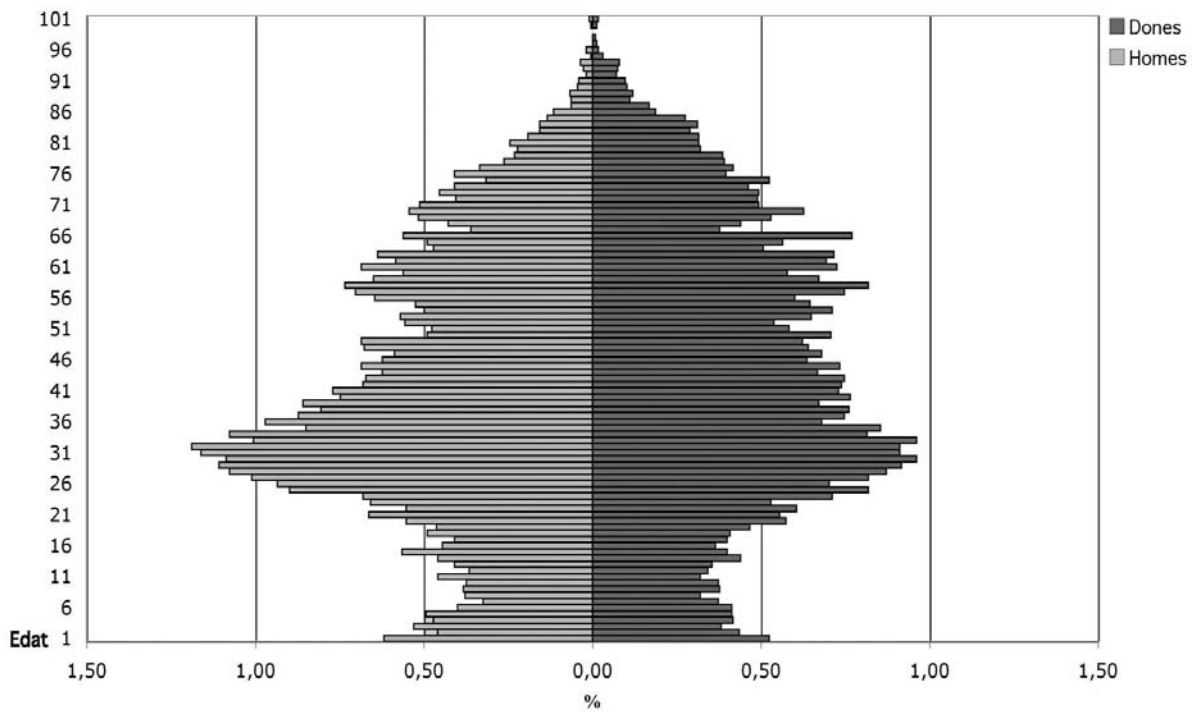
| Edat | Sexe | | Total |
|------|-------|-------|-------|
| | Homes | Dones | |
| 0 | 139 | 118 | 257 |
| 1 | 103 | 98 | 201 |
| 2 | 119 | 86 | 205 |
| 3 | 106 | 94 | 200 |
| 4 | 111 | 93 | 204 |
| 5 | 90 | 93 | 183 |
| 6 | 73 | 84 | 157 |
| 7 | 85 | 72 | 157 |
| 8 | 86 | 85 | 171 |
| 9 | 84 | 84 | 168 |
| 10 | 103 | 72 | 175 |
| 11 | 82 | 77 | 159 |
| 12 | 92 | 80 | 172 |
| 13 | 103 | 99 | 202 |
| 14 | 127 | 90 | 217 |
| 15 | 100 | 82 | 182 |
| 16 | 92 | 90 | 182 |
| 17 | 110 | 92 | 202 |
| 18 | 104 | 105 | 209 |
| 19 | 124 | 129 | 253 |
| 20 | 149 | 125 | 274 |
| 21 | 124 | 136 | 260 |
| 22 | 148 | 119 | 267 |
| 23 | 153 | 160 | 313 |
| 24 | 202 | 184 | 386 |
| 25 | 210 | 158 | 368 |
| 26 | 227 | 184 | 411 |
| 27 | 242 | 196 | 438 |
| 28 | 249 | 206 | 455 |
| 29 | 244 | 216 | 460 |
| 30 | 261 | 205 | 466 |
| 31 | 267 | 205 | 472 |
| 32 | 226 | 216 | 442 |
| 33 | 242 | 183 | 425 |
| 34 | 191 | 192 | 383 |
| 35 | 218 | 153 | 371 |
| 36 | 196 | 168 | 364 |
| 37 | 181 | 171 | 352 |
| 38 | 193 | 151 | 344 |
| 39 | 168 | 172 | 340 |
| 40 | 173 | 164 | 337 |
| 41 | 153 | 166 | 319 |
| 42 | 151 | 168 | 319 |
| 43 | 140 | 150 | 290 |
| 44 | 154 | 165 | 319 |
| 45 | 140 | 143 | 283 |
| 46 | 132 | 153 | 285 |
| 47 | 152 | 144 | 296 |
| 48 | 154 | 140 | 294 |
| 49 | 110 | 159 | 269 |
| 50 | 107 | 131 | 238 |

| Edat | Sexe | | Total |
|--------------|---------------|---------------|---------------|
| | Homes | Dones | |
| 51 | 125 | 121 | 246 |
| 52 | 128 | 146 | 274 |
| 53 | 112 | 160 | 272 |
| 54 | 118 | 145 | 263 |
| 55 | 145 | 135 | 280 |
| 56 | 158 | 168 | 326 |
| 57 | 165 | 184 | 349 |
| 58 | 146 | 151 | 297 |
| 59 | 126 | 130 | 256 |
| 60 | 154 | 163 | 317 |
| 61 | 131 | 156 | 287 |
| 62 | 143 | 161 | 304 |
| 63 | 106 | 114 | 220 |
| 64 | 110 | 127 | 237 |
| 65 | 126 | 173 | 299 |
| 66 | 81 | 85 | 166 |
| 67 | 96 | 99 | 195 |
| 68 | 116 | 119 | 235 |
| 69 | 122 | 141 | 263 |
| 70 | 115 | 111 | 226 |
| 71 | 91 | 110 | 201 |
| 72 | 102 | 111 | 213 |
| 73 | 92 | 104 | 196 |
| 74 | 71 | 118 | 189 |
| 75 | 92 | 89 | 181 |
| 76 | 75 | 94 | 169 |
| 77 | 59 | 88 | 147 |
| 78 | 52 | 87 | 139 |
| 79 | 50 | 72 | 122 |
| 80 | 55 | 71 | 126 |
| 81 | 43 | 71 | 114 |
| 82 | 35 | 65 | 100 |
| 83 | 35 | 70 | 105 |
| 84 | 30 | 62 | 92 |
| 85 | 26 | 42 | 68 |
| 86 | 14 | 38 | 52 |
| 87 | 14 | 25 | 39 |
| 88 | 15 | 27 | 42 |
| 89 | 10 | 23 | 33 |
| 90 | 9 | 22 | 31 |
| 91 | 4 | 16 | 20 |
| 92 | 6 | 17 | 23 |
| 93 | 8 | 18 | 26 |
| 94 | 1 | 7 | 8 |
| 95 | 4 | 4 | 8 |
| 96 | – | 3 | 3 |
| 97 | – | 2 | 2 |
| 98 | – | – | – |
| 99 | 1 | 3 | 4 |
| 100 o més | 2 | 4 | 6 |
| Total | 11.209 | 11.258 | 22.467 |

Font: Padró municipal d'habitants, 2005



I.G2 Piràmide de població. Districte I



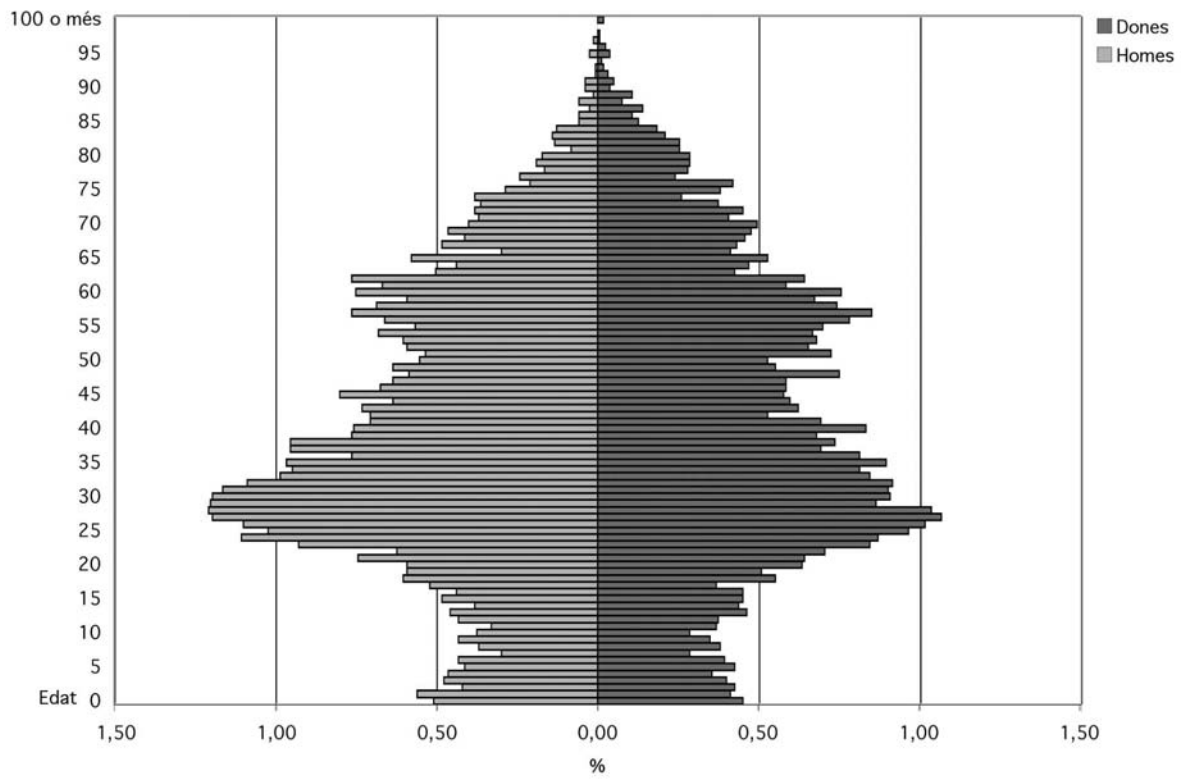
I.T7 Població per sexe i edat. Districte II

| Edat | Sexe | | Total | Edat | Sexe | | Total |
|------|-------|-------|-------|--------------|--------------|--------------|---------------|
| | Homes | Dones | | | Homes | Dones | |
| 0 | 80 | 71 | 151 | 51 | 84 | 114 | 198 |
| 1 | 88 | 65 | 153 | 52 | 93 | 103 | 196 |
| 2 | 66 | 67 | 133 | 53 | 95 | 107 | 202 |
| 3 | 75 | 63 | 138 | 54 | 107 | 105 | 212 |
| 4 | 73 | 56 | 129 | 55 | 89 | 110 | 199 |
| 5 | 65 | 67 | 132 | 56 | 104 | 123 | 227 |
| 6 | 68 | 62 | 130 | 57 | 120 | 134 | 254 |
| 7 | 47 | 45 | 92 | 58 | 108 | 117 | 225 |
| 8 | 58 | 60 | 118 | 59 | 93 | 106 | 199 |
| 9 | 68 | 55 | 123 | 60 | 118 | 119 | 237 |
| 10 | 59 | 45 | 104 | 61 | 105 | 92 | 197 |
| 11 | 52 | 58 | 110 | 62 | 120 | 101 | 221 |
| 12 | 68 | 59 | 127 | 63 | 79 | 67 | 146 |
| 13 | 72 | 73 | 145 | 64 | 69 | 74 | 143 |
| 14 | 60 | 69 | 129 | 65 | 91 | 83 | 174 |
| 15 | 76 | 71 | 147 | 66 | 47 | 65 | 112 |
| 16 | 69 | 71 | 140 | 67 | 76 | 68 | 144 |
| 17 | 82 | 58 | 140 | 68 | 65 | 72 | 137 |
| 18 | 95 | 87 | 182 | 69 | 73 | 75 | 148 |
| 19 | 93 | 80 | 173 | 70 | 63 | 78 | 141 |
| 20 | 93 | 100 | 193 | 71 | 58 | 64 | 122 |
| 21 | 117 | 101 | 218 | 72 | 60 | 71 | 131 |
| 22 | 98 | 111 | 209 | 73 | 57 | 59 | 116 |
| 23 | 146 | 133 | 279 | 74 | 60 | 41 | 101 |
| 24 | 174 | 137 | 311 | 75 | 45 | 60 | 105 |
| 25 | 161 | 152 | 313 | 76 | 33 | 66 | 99 |
| 26 | 173 | 160 | 333 | 77 | 38 | 38 | 76 |
| 27 | 188 | 168 | 356 | 78 | 26 | 44 | 70 |
| 28 | 190 | 163 | 353 | 79 | 30 | 45 | 75 |
| 29 | 189 | 136 | 325 | 80 | 27 | 45 | 72 |
| 30 | 188 | 143 | 331 | 81 | 13 | 40 | 53 |
| 31 | 183 | 142 | 325 | 82 | 21 | 40 | 61 |
| 32 | 171 | 144 | 315 | 83 | 22 | 33 | 55 |
| 33 | 155 | 133 | 288 | 84 | 20 | 29 | 49 |
| 34 | 149 | 128 | 277 | 85 | 9 | 20 | 29 |
| 35 | 152 | 141 | 293 | 86 | 9 | 17 | 26 |
| 36 | 120 | 128 | 248 | 87 | 4 | 22 | 26 |
| 37 | 150 | 109 | 259 | 88 | 9 | 12 | 21 |
| 38 | 150 | 116 | 266 | 89 | 2 | 17 | 19 |
| 39 | 120 | 107 | 227 | 90 | 6 | 6 | 12 |
| 40 | 119 | 131 | 250 | 91 | 6 | 8 | 14 |
| 41 | 111 | 109 | 220 | 92 | 1 | 5 | 6 |
| 42 | 111 | 83 | 194 | 93 | 1 | 3 | 4 |
| 43 | 115 | 98 | 213 | 94 | – | 2 | 2 |
| 44 | 100 | 94 | 194 | 95 | 4 | 6 | 10 |
| 45 | 126 | 91 | 217 | 96 | – | 4 | 4 |
| 46 | 106 | 92 | 198 | 97 | 2 | 1 | 3 |
| 47 | 100 | 92 | 192 | 98 | – | 1 | 1 |
| 48 | 92 | 118 | 210 | 99 | – | – | – |
| 49 | 100 | 87 | 187 | 100 o més | – | 3 | 3 |
| 50 | 87 | 83 | 170 | Total | 8.010 | 7.727 | 15.737 |

Font: Padró municipal d'habitants, 2005



I.G3 Piràmide de població. Districte II



I.T8 Població per sexe i edat. Districte III

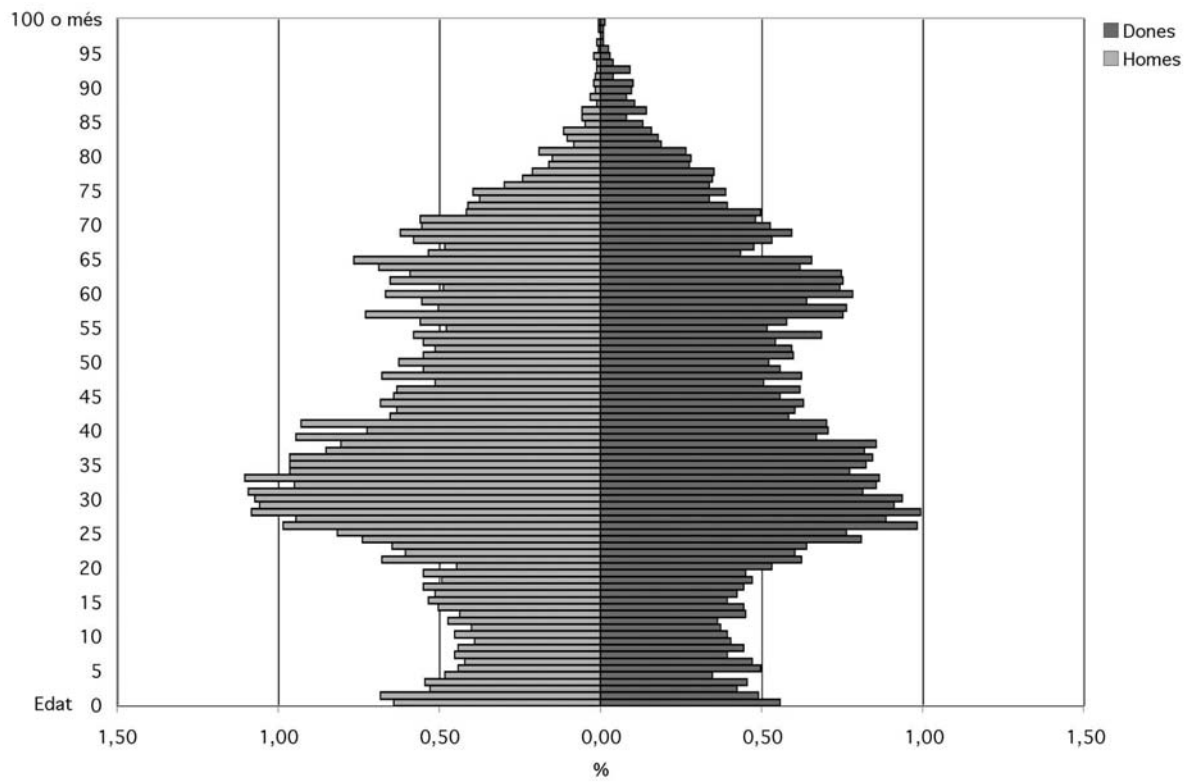
| Edat | Sexe | | Total |
|------|-------|-------|-------|
| | Homes | Dones | |
| 0 | 125 | 109 | 234 |
| 1 | 133 | 96 | 229 |
| 2 | 103 | 83 | 186 |
| 3 | 106 | 89 | 195 |
| 4 | 94 | 68 | 162 |
| 5 | 86 | 97 | 183 |
| 6 | 82 | 92 | 174 |
| 7 | 88 | 77 | 165 |
| 8 | 86 | 87 | 173 |
| 9 | 76 | 79 | 155 |
| 10 | 88 | 77 | 165 |
| 11 | 78 | 73 | 151 |
| 12 | 92 | 71 | 163 |
| 13 | 85 | 88 | 173 |
| 14 | 98 | 87 | 185 |
| 15 | 104 | 77 | 181 |
| 16 | 100 | 83 | 183 |
| 17 | 107 | 87 | 194 |
| 18 | 96 | 92 | 188 |
| 19 | 107 | 88 | 195 |
| 20 | 87 | 104 | 191 |
| 21 | 132 | 122 | 254 |
| 22 | 118 | 118 | 236 |
| 23 | 126 | 125 | 251 |
| 24 | 144 | 158 | 302 |
| 25 | 159 | 149 | 308 |
| 26 | 192 | 192 | 384 |
| 27 | 184 | 173 | 357 |
| 28 | 211 | 194 | 405 |
| 29 | 206 | 178 | 384 |
| 30 | 209 | 183 | 392 |
| 31 | 213 | 159 | 372 |
| 32 | 185 | 167 | 352 |
| 33 | 215 | 169 | 384 |
| 34 | 188 | 151 | 339 |
| 35 | 188 | 161 | 349 |
| 36 | 188 | 165 | 353 |
| 37 | 166 | 160 | 326 |
| 38 | 157 | 167 | 324 |
| 39 | 184 | 131 | 315 |
| 40 | 141 | 138 | 279 |
| 41 | 181 | 137 | 318 |
| 42 | 127 | 114 | 241 |
| 43 | 123 | 118 | 241 |
| 44 | 133 | 123 | 256 |
| 45 | 125 | 109 | 234 |
| 46 | 123 | 121 | 244 |
| 47 | 100 | 99 | 199 |
| 48 | 132 | 122 | 254 |
| 49 | 107 | 109 | 216 |
| 50 | 122 | 102 | 224 |

| Edat | Sexe | | Total |
|--------------|--------------|--------------|---------------|
| | Homes | Dones | |
| 51 | 107 | 117 | 224 |
| 52 | 100 | 116 | 216 |
| 53 | 107 | 106 | 213 |
| 54 | 113 | 134 | 247 |
| 55 | 93 | 101 | 194 |
| 56 | 109 | 113 | 222 |
| 57 | 142 | 147 | 289 |
| 58 | 98 | 149 | 247 |
| 59 | 108 | 125 | 233 |
| 60 | 130 | 153 | 283 |
| 61 | 95 | 145 | 240 |
| 62 | 127 | 147 | 274 |
| 63 | 115 | 146 | 261 |
| 64 | 134 | 121 | 255 |
| 65 | 149 | 128 | 277 |
| 66 | 104 | 85 | 189 |
| 67 | 94 | 93 | 187 |
| 68 | 113 | 104 | 217 |
| 69 | 121 | 116 | 237 |
| 70 | 108 | 103 | 211 |
| 71 | 109 | 94 | 203 |
| 72 | 81 | 97 | 178 |
| 73 | 80 | 77 | 157 |
| 74 | 73 | 66 | 139 |
| 75 | 77 | 76 | 153 |
| 76 | 58 | 66 | 124 |
| 77 | 47 | 68 | 115 |
| 78 | 41 | 69 | 110 |
| 79 | 31 | 54 | 85 |
| 80 | 29 | 55 | 84 |
| 81 | 37 | 52 | 89 |
| 82 | 16 | 37 | 53 |
| 83 | 20 | 35 | 55 |
| 84 | 22 | 31 | 53 |
| 85 | 9 | 26 | 35 |
| 86 | 11 | 16 | 27 |
| 87 | 11 | 28 | 39 |
| 88 | 2 | 21 | 23 |
| 89 | 6 | 16 | 22 |
| 90 | 3 | 19 | 22 |
| 91 | 4 | 20 | 24 |
| 92 | 3 | 8 | 11 |
| 93 | 2 | 18 | 20 |
| 94 | 2 | 8 | 10 |
| 95 | 4 | 6 | 10 |
| 96 | 1 | 5 | 6 |
| 97 | 2 | 2 | 4 |
| 98 | – | 2 | 2 |
| 99 | 1 | 2 | 3 |
| 100 o més | 1 | 3 | 4 |
| Total | 9.850 | 9.644 | 19.494 |

Font: Padró municipal d'habitants, 2005



I.G4 Piràmide de població. Districte III



I.T9 Població per sexe i edat. Districte IV

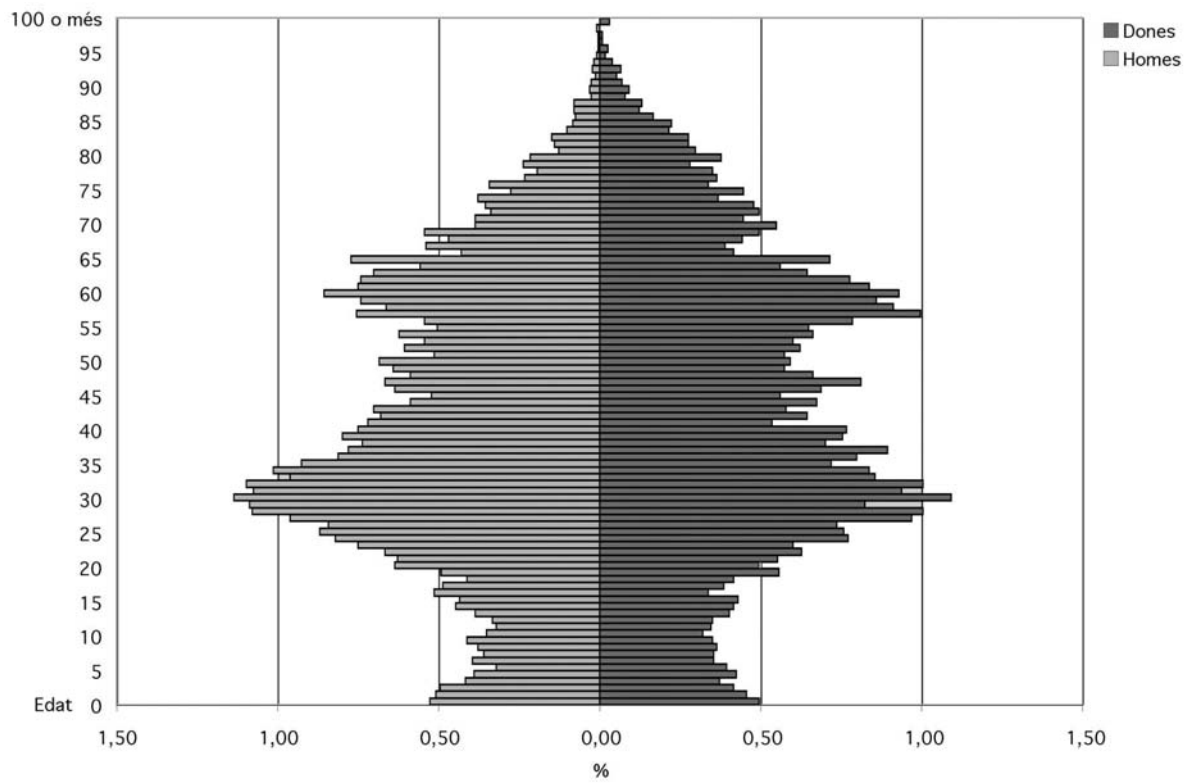
| Edat | Sexe | | Total |
|------|-------|-------|-------|
| | Homes | Dones | |
| 0 | 120 | 113 | 233 |
| 1 | 116 | 104 | 220 |
| 2 | 113 | 95 | 208 |
| 3 | 95 | 85 | 180 |
| 4 | 89 | 97 | 186 |
| 5 | 73 | 90 | 163 |
| 6 | 90 | 81 | 171 |
| 7 | 82 | 81 | 163 |
| 8 | 86 | 83 | 169 |
| 9 | 94 | 80 | 174 |
| 10 | 80 | 73 | 153 |
| 11 | 73 | 79 | 152 |
| 12 | 76 | 80 | 156 |
| 13 | 88 | 92 | 180 |
| 14 | 102 | 95 | 197 |
| 15 | 99 | 98 | 197 |
| 16 | 117 | 77 | 194 |
| 17 | 111 | 88 | 199 |
| 18 | 94 | 95 | 189 |
| 19 | 112 | 127 | 239 |
| 20 | 145 | 113 | 258 |
| 21 | 143 | 126 | 269 |
| 22 | 152 | 143 | 295 |
| 23 | 171 | 137 | 308 |
| 24 | 187 | 176 | 363 |
| 25 | 198 | 173 | 371 |
| 26 | 192 | 168 | 360 |
| 27 | 219 | 221 | 440 |
| 28 | 246 | 229 | 475 |
| 29 | 248 | 188 | 436 |
| 30 | 259 | 249 | 508 |
| 31 | 245 | 214 | 459 |
| 32 | 250 | 229 | 479 |
| 33 | 219 | 195 | 414 |
| 34 | 231 | 191 | 422 |
| 35 | 211 | 164 | 375 |
| 36 | 185 | 182 | 367 |
| 37 | 178 | 204 | 382 |
| 38 | 168 | 160 | 328 |
| 39 | 182 | 172 | 354 |
| 40 | 171 | 175 | 346 |
| 41 | 164 | 122 | 286 |
| 42 | 155 | 147 | 302 |
| 43 | 160 | 132 | 292 |
| 44 | 134 | 154 | 288 |
| 45 | 119 | 128 | 247 |
| 46 | 145 | 157 | 302 |
| 47 | 152 | 185 | 337 |
| 48 | 134 | 151 | 285 |
| 49 | 146 | 131 | 277 |
| 50 | 156 | 135 | 291 |

| Edat | Sexe | | Total |
|--------------|---------------|---------------|---------------|
| | Homes | Dones | |
| 51 | 117 | 131 | 248 |
| 52 | 138 | 142 | 280 |
| 53 | 124 | 137 | 261 |
| 54 | 142 | 151 | 293 |
| 55 | 115 | 148 | 263 |
| 56 | 124 | 179 | 303 |
| 57 | 172 | 227 | 399 |
| 58 | 151 | 208 | 359 |
| 59 | 169 | 196 | 365 |
| 60 | 195 | 212 | 407 |
| 61 | 171 | 191 | 362 |
| 62 | 169 | 177 | 346 |
| 63 | 160 | 147 | 307 |
| 64 | 127 | 128 | 255 |
| 65 | 176 | 163 | 339 |
| 66 | 98 | 95 | 193 |
| 67 | 123 | 89 | 212 |
| 68 | 107 | 101 | 208 |
| 69 | 124 | 113 | 237 |
| 70 | 88 | 125 | 213 |
| 71 | 88 | 102 | 190 |
| 72 | 77 | 113 | 190 |
| 73 | 81 | 109 | 190 |
| 74 | 86 | 84 | 170 |
| 75 | 63 | 102 | 165 |
| 76 | 78 | 77 | 155 |
| 77 | 53 | 83 | 136 |
| 78 | 44 | 80 | 124 |
| 79 | 54 | 64 | 118 |
| 80 | 49 | 86 | 135 |
| 81 | 29 | 68 | 97 |
| 82 | 32 | 63 | 95 |
| 83 | 34 | 63 | 97 |
| 84 | 23 | 49 | 72 |
| 85 | 19 | 51 | 70 |
| 86 | 17 | 38 | 55 |
| 87 | 18 | 28 | 46 |
| 88 | 18 | 30 | 48 |
| 89 | 6 | 18 | 24 |
| 90 | 7 | 21 | 28 |
| 91 | 6 | 16 | 22 |
| 92 | 3 | 12 | 15 |
| 93 | 5 | 15 | 20 |
| 94 | 4 | 9 | 13 |
| 95 | 2 | 4 | 6 |
| 96 | 1 | 6 | 7 |
| 97 | 1 | 2 | 3 |
| 98 | 1 | 2 | 3 |
| 99 | 2 | – | 2 |
| 100 o més | – | 7 | 7 |
| Total | 11.266 | 11.526 | 22.792 |

Font: Padró municipal d'habitants, 2005



I.G5 Piràmide de població. Districte IV



I.T10 Població per sexe i edat. Districte V

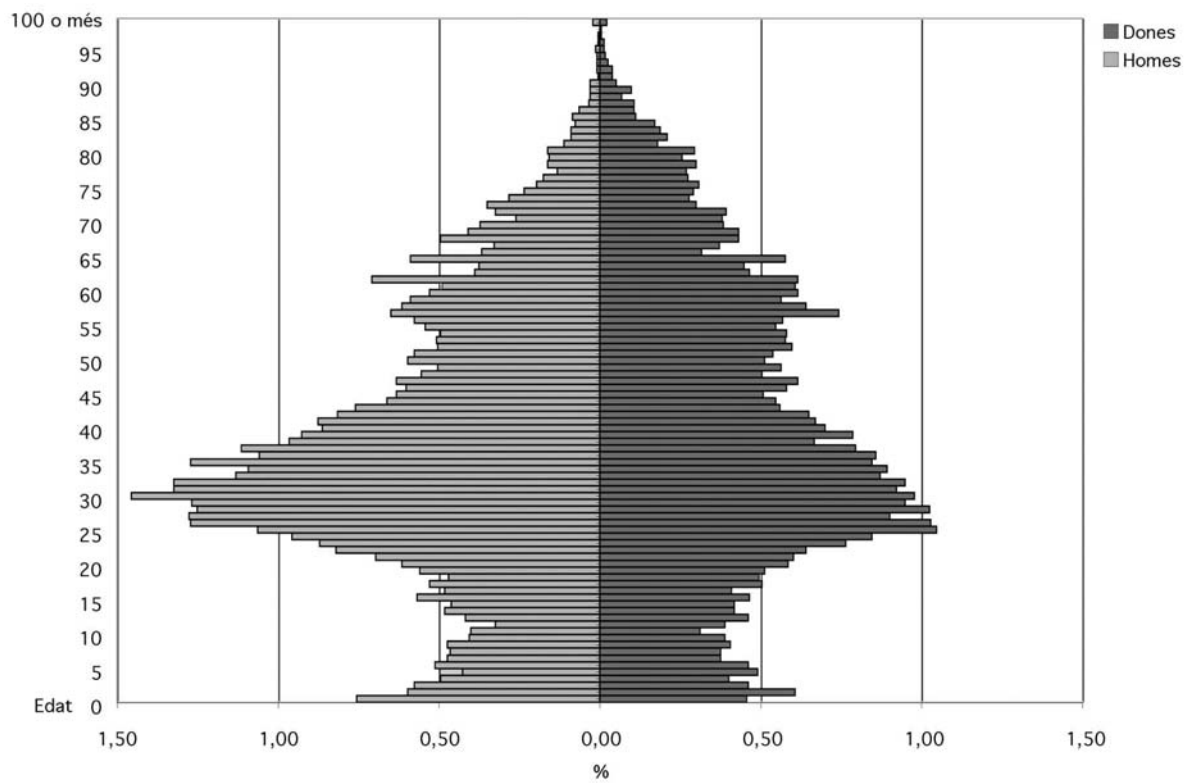
| Edat | Sexe | | Total |
|------|-------|-------|-------|
| | Homes | Dones | |
| 0 | 177 | 107 | 284 |
| 1 | 140 | 142 | 282 |
| 2 | 135 | 108 | 243 |
| 3 | 116 | 94 | 210 |
| 4 | 100 | 115 | 215 |
| 5 | 120 | 108 | 228 |
| 6 | 111 | 88 | 199 |
| 7 | 109 | 88 | 197 |
| 8 | 111 | 95 | 206 |
| 9 | 95 | 91 | 186 |
| 10 | 94 | 73 | 167 |
| 11 | 76 | 91 | 167 |
| 12 | 98 | 108 | 206 |
| 13 | 113 | 98 | 211 |
| 14 | 108 | 98 | 206 |
| 15 | 133 | 109 | 242 |
| 16 | 113 | 96 | 209 |
| 17 | 124 | 118 | 242 |
| 18 | 110 | 116 | 226 |
| 19 | 131 | 120 | 251 |
| 20 | 144 | 137 | 281 |
| 21 | 163 | 141 | 304 |
| 22 | 192 | 150 | 342 |
| 23 | 204 | 179 | 383 |
| 24 | 224 | 198 | 422 |
| 25 | 249 | 245 | 494 |
| 26 | 298 | 241 | 539 |
| 27 | 299 | 211 | 510 |
| 28 | 293 | 240 | 533 |
| 29 | 297 | 222 | 519 |
| 30 | 341 | 229 | 570 |
| 31 | 310 | 216 | 526 |
| 32 | 310 | 222 | 532 |
| 33 | 265 | 204 | 469 |
| 34 | 256 | 209 | 465 |
| 35 | 298 | 198 | 496 |
| 36 | 248 | 201 | 449 |
| 37 | 261 | 186 | 447 |
| 38 | 226 | 156 | 382 |
| 39 | 217 | 184 | 401 |
| 40 | 202 | 164 | 366 |
| 41 | 205 | 157 | 362 |
| 42 | 191 | 152 | 343 |
| 43 | 178 | 131 | 309 |
| 44 | 155 | 128 | 283 |
| 45 | 148 | 119 | 267 |
| 46 | 141 | 136 | 277 |
| 47 | 148 | 144 | 292 |
| 48 | 130 | 118 | 248 |
| 49 | 118 | 132 | 250 |
| 50 | 140 | 120 | 260 |

| Edat | Sexe | | Total |
|--------------|---------------|---------------|---------------|
| | Homes | Dones | |
| 51 | 135 | 126 | 261 |
| 52 | 118 | 140 | 258 |
| 53 | 119 | 135 | 254 |
| 54 | 116 | 136 | 252 |
| 55 | 127 | 128 | 255 |
| 56 | 135 | 133 | 268 |
| 57 | 152 | 174 | 326 |
| 58 | 144 | 150 | 294 |
| 59 | 138 | 132 | 270 |
| 60 | 124 | 144 | 268 |
| 61 | 115 | 142 | 257 |
| 62 | 166 | 144 | 310 |
| 63 | 91 | 109 | 200 |
| 64 | 88 | 105 | 193 |
| 65 | 138 | 135 | 273 |
| 66 | 86 | 74 | 160 |
| 67 | 77 | 87 | 164 |
| 68 | 116 | 101 | 217 |
| 69 | 96 | 101 | 197 |
| 70 | 87 | 90 | 177 |
| 71 | 61 | 89 | 150 |
| 72 | 76 | 92 | 168 |
| 73 | 82 | 70 | 152 |
| 74 | 66 | 65 | 131 |
| 75 | 55 | 68 | 123 |
| 76 | 46 | 72 | 118 |
| 77 | 41 | 64 | 105 |
| 78 | 31 | 63 | 94 |
| 79 | 38 | 70 | 108 |
| 80 | 37 | 60 | 97 |
| 81 | 38 | 69 | 107 |
| 82 | 26 | 42 | 68 |
| 83 | 21 | 49 | 70 |
| 84 | 21 | 44 | 65 |
| 85 | 18 | 40 | 58 |
| 86 | 20 | 26 | 46 |
| 87 | 15 | 25 | 40 |
| 88 | 8 | 25 | 33 |
| 89 | 7 | 16 | 23 |
| 90 | 7 | 23 | 30 |
| 91 | 7 | 12 | 19 |
| 92 | 1 | 9 | 10 |
| 93 | 2 | 9 | 11 |
| 94 | 2 | 6 | 8 |
| 95 | 2 | 4 | 6 |
| 96 | 3 | 3 | 6 |
| 97 | 1 | 3 | 4 |
| 98 | 1 | 1 | 2 |
| 99 | – | 1 | 1 |
| 100 o més | 5 | 5 | 10 |
| Total | 12.271 | 11.144 | 23.415 |

Font: Padró municipal d'habitants, 2005



I.G6 Piràmide de població. Districte V



I.TII Població per sexe i edat. Districte VI

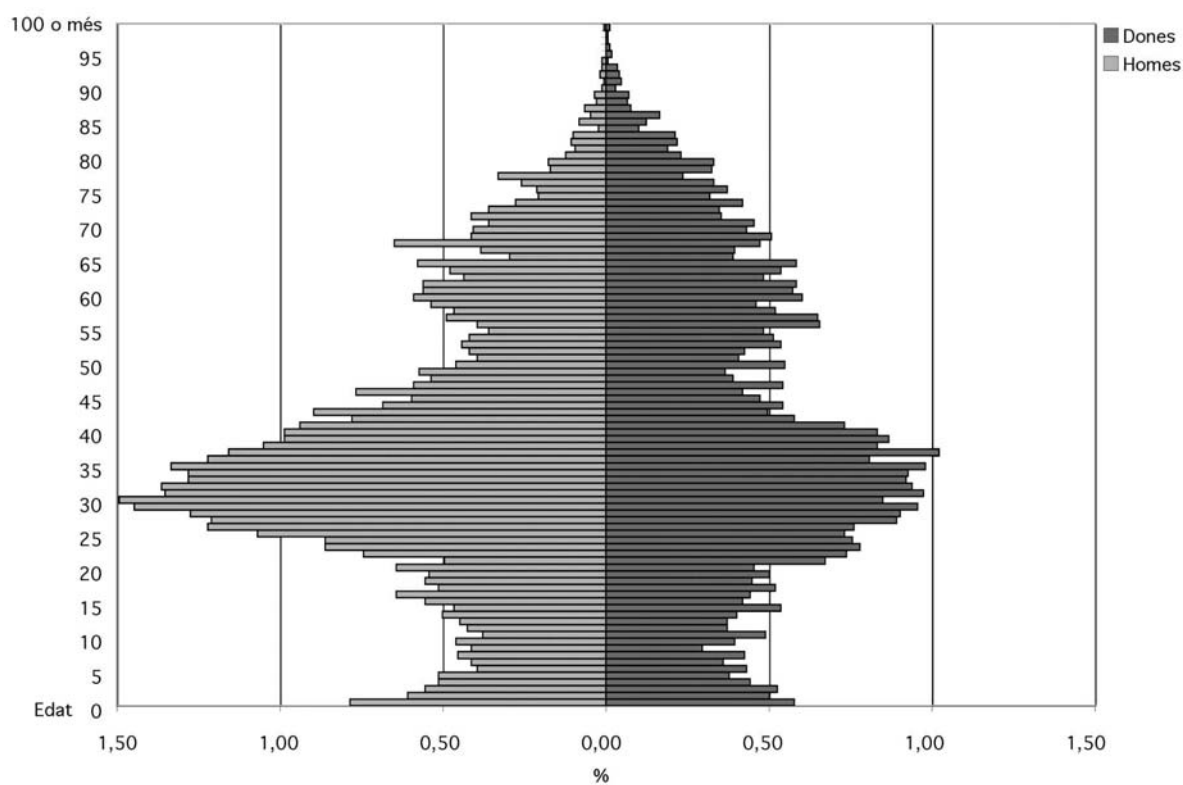
| Edat | Sexe | | Total |
|------|-------|-------|-------|
| | Homes | Dones | |
| 0 | 133 | 98 | 231 |
| 1 | 103 | 85 | 188 |
| 2 | 94 | 89 | 183 |
| 3 | 87 | 75 | 162 |
| 4 | 87 | 64 | 151 |
| 5 | 67 | 73 | 140 |
| 6 | 70 | 61 | 131 |
| 7 | 77 | 72 | 149 |
| 8 | 70 | 50 | 120 |
| 9 | 78 | 67 | 145 |
| 10 | 64 | 83 | 147 |
| 11 | 72 | 63 | 135 |
| 12 | 76 | 63 | 139 |
| 13 | 85 | 68 | 153 |
| 14 | 79 | 91 | 170 |
| 15 | 94 | 71 | 165 |
| 16 | 109 | 75 | 184 |
| 17 | 87 | 88 | 175 |
| 18 | 94 | 76 | 170 |
| 19 | 92 | 85 | 177 |
| 20 | 109 | 77 | 186 |
| 21 | 84 | 114 | 198 |
| 22 | 126 | 125 | 251 |
| 23 | 146 | 132 | 278 |
| 24 | 146 | 128 | 274 |
| 25 | 181 | 124 | 305 |
| 26 | 207 | 129 | 336 |
| 27 | 205 | 151 | 356 |
| 28 | 216 | 153 | 369 |
| 29 | 245 | 162 | 407 |
| 30 | 253 | 144 | 397 |
| 31 | 229 | 165 | 394 |
| 32 | 231 | 159 | 390 |
| 33 | 217 | 156 | 373 |
| 34 | 217 | 157 | 374 |
| 35 | 226 | 166 | 392 |
| 36 | 207 | 137 | 344 |
| 37 | 196 | 173 | 369 |
| 38 | 178 | 141 | 319 |
| 39 | 167 | 147 | 314 |
| 40 | 167 | 141 | 308 |
| 41 | 159 | 124 | 283 |
| 42 | 132 | 98 | 230 |
| 43 | 152 | 84 | 236 |
| 44 | 116 | 92 | 208 |
| 45 | 101 | 80 | 181 |
| 46 | 130 | 71 | 201 |
| 47 | 100 | 92 | 192 |
| 48 | 91 | 66 | 157 |
| 49 | 97 | 62 | 159 |
| 50 | 78 | 93 | 171 |

| Edat | Sexe | | Total |
|--------------|--------------|--------------|---------------|
| | Homes | Dones | |
| 51 | 67 | 69 | 136 |
| 52 | 71 | 72 | 143 |
| 53 | 75 | 91 | 166 |
| 54 | 71 | 87 | 158 |
| 55 | 61 | 82 | 143 |
| 56 | 67 | 111 | 178 |
| 57 | 83 | 110 | 193 |
| 58 | 79 | 88 | 167 |
| 59 | 91 | 78 | 169 |
| 60 | 100 | 102 | 202 |
| 61 | 95 | 97 | 192 |
| 62 | 95 | 99 | 194 |
| 63 | 74 | 82 | 156 |
| 64 | 81 | 91 | 172 |
| 65 | 98 | 99 | 197 |
| 66 | 50 | 66 | 116 |
| 67 | 65 | 67 | 132 |
| 68 | 110 | 80 | 190 |
| 69 | 70 | 86 | 156 |
| 70 | 69 | 73 | 142 |
| 71 | 61 | 77 | 138 |
| 72 | 70 | 60 | 130 |
| 73 | 61 | 59 | 120 |
| 74 | 47 | 71 | 118 |
| 75 | 35 | 54 | 89 |
| 76 | 36 | 63 | 99 |
| 77 | 44 | 56 | 100 |
| 78 | 56 | 40 | 96 |
| 79 | 29 | 55 | 84 |
| 80 | 30 | 56 | 86 |
| 81 | 21 | 39 | 60 |
| 82 | 16 | 32 | 48 |
| 83 | 18 | 37 | 55 |
| 84 | 17 | 36 | 53 |
| 85 | 4 | 17 | 21 |
| 86 | 14 | 21 | 35 |
| 87 | 8 | 28 | 36 |
| 88 | 11 | 13 | 24 |
| 89 | 5 | 11 | 16 |
| 90 | 6 | 12 | 18 |
| 91 | 2 | 5 | 7 |
| 92 | 1 | 8 | 9 |
| 93 | 3 | 7 | 10 |
| 94 | 2 | 5 | 7 |
| 95 | 2 | 1 | 3 |
| 96 | – | 2 | 2 |
| 97 | – | 2 | 2 |
| 98 | – | 1 | 1 |
| 99 | – | 1 | 1 |
| 100 o més | 1 | 2 | 3 |
| Total | 8.999 | 7.941 | 16.940 |

Font: Padró municipal d'habitants, 2005



I.G7 Piràmide de població. Districte VI



I.T12 Població per grups d'edat i sexe. Districtes

| Districte | 0 – 15 anys | | | 16 – 64 anys | | | 65 anys i més | | |
|-----------|-------------|-------|--------|--------------|--------|--------|---------------|--------|--------|
| | Sexe | | | Sexe | | | Sexe | | |
| | Homes | Dones | Total | Homes | Dones | Total | Homes | Dones | Total |
| I | 1.603 | 1.407 | 3.010 | 7.954 | 7.660 | 15.614 | 1.652 | 2.191 | 3.843 |
| II | 1.075 | 986 | 2.061 | 5.957 | 5.498 | 11.455 | 978 | 1.243 | 2.221 |
| III | 1.524 | 1.350 | 2.874 | 6.854 | 6.588 | 13.442 | 1.472 | 1.706 | 3.178 |
| IV | 1.476 | 1.426 | 2.902 | 8.173 | 8.012 | 16.185 | 1.617 | 2.089 | 3.705 |
| V | 1.836 | 1.613 | 3.449 | 9.097 | 7.818 | 16.915 | 1.338 | 1.713 | 3.051 |
| VI | 1.336 | 1.173 | 2.509 | 6.601 | 5.426 | 12.027 | 1.062 | 1.342 | 2.404 |
| Total | 8.850 | 7.955 | 16.805 | 44.636 | 41.002 | 85.638 | 8.119 | 10.284 | 18.402 |

Font: Padró municipal d'habitants, 2005



I.T13 Població per grups d'edat i sexe. Barris

| Districte | 0 – 15 anys | | | 16 – 64 anys | | | 65 anys i més | | |
|-------------------|--------------|--------------|---------------|---------------|---------------|---------------|---------------|---------------|---------------|
| | Sexe | | Total | Sexe | | Total | Sexe | | Total |
| | Homes | Dones | | Homes | Dones | | Homes | Dones | |
| Els Safarells | 87 | 71 | 158 | 428 | 407 | 835 | 87 | 132 | 219 |
| El Raval | 700 | 611 | 1.311 | 3.336 | 2.694 | 6.030 | 418 | 560 | 978 |
| Santa Rosa | 1.080 | 954 | 2.034 | 5.485 | 4.865 | 10.350 | 870 | 1.059 | 1.929 |
| Can Mariner | 577 | 544 | 1.121 | 2.861 | 2.616 | 5.477 | 572 | 741 | 1.313 |
| El Fondo | 1.337 | 1.182 | 2.519 | 6.566 | 5.413 | 11.979 | 1.059 | 1.343 | 2.402 |
| El Llatí | 686 | 618 | 1.304 | 3.829 | 3.454 | 7.283 | 637 | 754 | 1.391 |
| La Riera Alta | 149 | 126 | 275 | 742 | 679 | 1.421 | 143 | 155 | 298 |
| El Cementiri Vell | 75 | 70 | 145 | 479 | 485 | 964 | 74 | 126 | 200 |
| El Centre | 1.162 | 1.011 | 2.173 | 5.890 | 5.785 | 11.675 | 1.232 | 1.655 | 2.887 |
| El Riu Sud | 925 | 915 | 1.840 | 5.251 | 5.127 | 10.378 | 1.107 | 1.380 | 2.487 |
| El Riu Nord | 555 | 511 | 1.066 | 2.916 | 2.878 | 5.794 | 520 | 712 | 1.232 |
| El Singuerlin | 978 | 868 | 1.846 | 4.504 | 4.346 | 8.850 | 886 | 1.105 | 1.991 |
| La Guinardera | 141 | 140 | 281 | 691 | 699 | 1.390 | 141 | 169 | 310 |
| Can Franquesa | 100 | 100 | 200 | 468 | 444 | 912 | 110 | 119 | 229 |
| Les Oliveres | 304 | 242 | 546 | 1.135 | 1.081 | 2.216 | 274 | 288 | 562 |
| Sense dades | 5 | 4 | 9 | 21 | 12 | 33 | 1 | 1 | 2 |
| Total | 8.861 | 7.967 | 16.828 | 44.602 | 40.985 | 85.587 | 8.131 | 10.299 | 18.430 |

Font: Padró municipal d'habitants, 2005

I.T14 Defuncions i naixements. Ciutat

| Naixements | Defuncions | Taxa bruta de natalitat | Taxa bruta de mortalitat |
|------------|------------|-------------------------|--------------------------|
| 1.371 | 843 | 11,37 | 6,99 |

Nota: Les taxes estan expressades en tant per mil

Font: Padró municipal d'habitants, 2005

I.T15 Defuncions i naixements. Districtes

| Districte | Naixements | Defuncions | Taxa bruta de natalitat | Taxa bruta de mortalitat |
|--------------|--------------|------------|-------------------------|--------------------------|
| I | 251 | 159 | 11,69 | 7,41 |
| II | 153 | 96 | 9,72 | 6,10 |
| III | 227 | 163 | 11,64 | 8,36 |
| IV | 228 | 179 | 10,00 | 7,85 |
| V | 277 | 157 | 12,08 | 6,85 |
| VI | 235 | 89 | 14,32 | 5,42 |
| Total | 1.371 | 843 | 11,53 | 7,09 |

Nota: Les taxes estan expressades en tant per mil

Font: Padró municipal d'habitants, 2005



I.T16 Defuncions i naixements. Barris

| Districte | Naixements | Defuncions | Taxa bruta de natalitat | Taxa bruta de mortalitat |
|-------------------|--------------|------------|-------------------------|--------------------------|
| Els Safarejots | 14 | 11 | 11,57 | 9,09 |
| El Raval | 101 | 46 | 12,14 | 5,53 |
| Santa Rosa | 167 | 100 | 11,67 | 6,99 |
| Can Mariner | 107 | 58 | 13,52 | 7,33 |
| El Fondo | 235 | 89 | 13,91 | 5,27 |
| El Llatí | 86 | 61 | 8,62 | 6,11 |
| La Riera Alta | 25 | 19 | 12,56 | 9,54 |
| El Cementiri Vell | 13 | 7 | 9,93 | 5,35 |
| El Centre | 167 | 119 | 9,98 | 7,11 |
| El Riu Sud | 146 | 117 | 9,93 | 7,95 |
| El Riu Nord | 82 | 62 | 9,02 | 6,82 |
| El Singuerlín | 140 | 102 | 11,03 | 8,04 |
| La Guinardera | 18 | 15 | 9,10 | 7,59 |
| Can Franquesa | 16 | 10 | 11,93 | 7,46 |
| Les Oliveres | 51 | 26 | 15,34 | 7,82 |
| Sense dades | 3 | 1 | — | — |
| Total | 1.371 | 843 | 11,35 | 6,98 |

Nota: Les taxes estan expressades en tant per mil

Font: Padró municipal d'habitants, 2005

I.T17 Índex d'envelliment i relació de dependència. Ciutat

| Índex d'envelliment | Sexe | | | Relació total de dependència |
|---------------------|-------|--------|--------|------------------------------|
| | Homes | Dones | Total | |
| | 91,74 | 122,24 | 129,28 | 0,41 |

Font: Padró municipal d'habitants, 2005

I.T18 Índex d'envelliment i relació de dependència. Districtes

| Índex d'envelliment | Sexe | | | Relació total de dependència | |
|---------------------|-----------|--------------|---------------|------------------------------|-------------|
| | Districte | Homes | Dones | | Total |
| I | | 103,06 | 155,72 | 127,67 | 0,44 |
| II | | 90,98 | 126,06 | 107,76 | 0,37 |
| III | | 96,59 | 126,37 | 108,39 | 0,45 |
| IV | | 109,55 | 146,42 | 132,13 | 0,40 |
| V | | 72,88 | 106,20 | 179,08 | 0,38 |
| VI | | 79,49 | 114,41 | 193,90 | 0,41 |
| Total | | 92,09 | 129,20 | 141,49 | 0,41 |

Font: Padró municipal d'habitants, 2005



I.T19 Índex d'envelliment i relació de dependència. Barris

| Índex d'envelliment Barri | Sexe | | | Relació total de dependència |
|------------------------------|--------|--------|--------|---------------------------------|
| | Homes | Dones | Total | |
| Els Safarells | 100,00 | 185,92 | 138,61 | 0,45 |
| El Raval | 59,71 | 91,65 | 74,60 | 0,38 |
| Santa Rosa | 80,56 | 111,01 | 94,84 | 0,38 |
| Can Mariner | 99,13 | 136,21 | 117,13 | 0,44 |
| El Fondo | 79,21 | 113,62 | 95,36 | 0,41 |
| El Llatí | 92,86 | 122,01 | 106,67 | 0,37 |
| La Riera Alta | 95,97 | 123,02 | 108,36 | 0,40 |
| El Cementiri Vell | 98,67 | 180,00 | 137,93 | 0,36 |
| El Centre | 106,02 | 163,70 | 132,86 | 0,43 |
| El Riu Sud | 119,68 | 150,82 | 135,16 | 0,42 |
| El Riu Nord | 93,69 | 139,33 | 115,57 | 0,40 |
| El Singuerlin | 90,59 | 127,30 | 107,85 | 0,43 |
| La Guinardera | 100,00 | 120,71 | 110,32 | 0,43 |
| Can Franquesa | 110,00 | 119,00 | 114,50 | 0,47 |
| Les Oliveres | 90,13 | 119,01 | 102,93 | 0,50 |
| Total | 91,76 | 129,27 | 109,52 | 0,41 |

Font: Padró municipal d'habitants, 2005

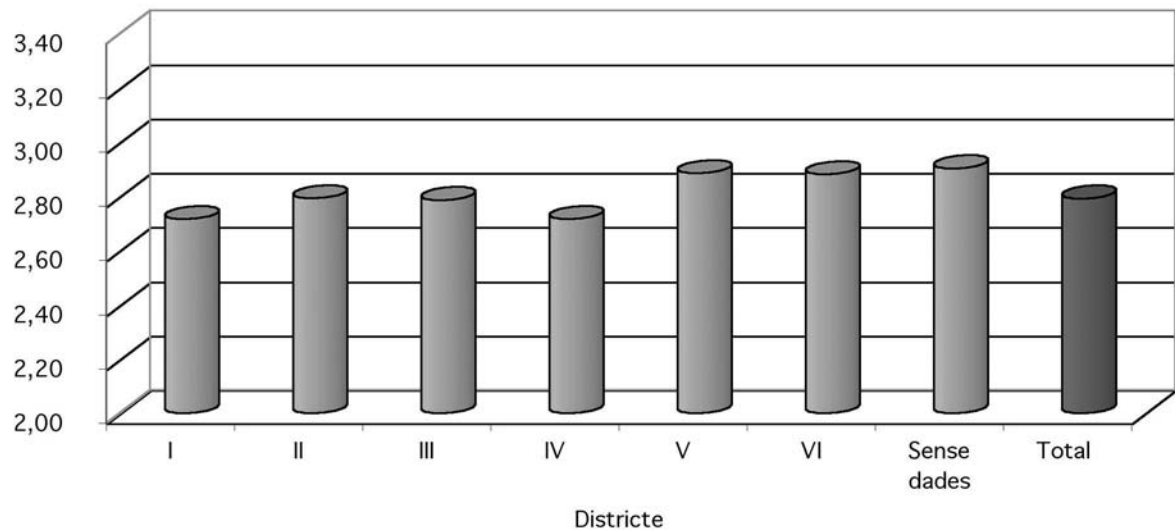
I.T20 Famílies segons la grandària. Districtes

| Districte | Nombre de persones a la família | | | | | | | | | | Grandària | |
|-------------|---------------------------------|--------|--------|-------|-------|-----|-----|-----|-----|----------|-----------|---------|
| | 1 | 2 | 3 | 4 | 5 | 6 | 7 | 8 | 9 | 10 o més | Total | mitjana |
| I | 1.613 | 2.428 | 1.857 | 1.435 | 364 | 120 | 57 | 42 | 22 | 40 | 7.978 | 2,71 |
| II | 1.072 | 1.662 | 1.361 | 1.049 | 307 | 101 | 41 | 39 | 14 | 30 | 5.676 | 2,79 |
| III | 1.243 | 2.031 | 1.748 | 1.423 | 373 | 91 | 43 | 17 | 12 | 34 | 7.015 | 2,79 |
| IV | 1.596 | 2.591 | 2.077 | 1.594 | 347 | 102 | 42 | 37 | 15 | 48 | 8.449 | 2,71 |
| V | 1.639 | 2.282 | 1.795 | 1.416 | 504 | 185 | 103 | 65 | 52 | 84 | 8.125 | 2,88 |
| VI | 1.294 | 1.637 | 1.272 | 830 | 274 | 153 | 102 | 76 | 67 | 72 | 5.777 | 2,88 |
| Sense Dades | 37 | 57 | 38 | 19 | 7 | 4 | 3 | 2 | 2 | 5 | 174 | 2,90 |
| Total | 8.494 | 12.688 | 10.148 | 7.766 | 2.176 | 756 | 391 | 278 | 184 | 313 | 43.194 | 2,79 |

Font: Padró municipal d'habitants, 2004



I.G8 Nombre mitjà de persones per família. Districtes



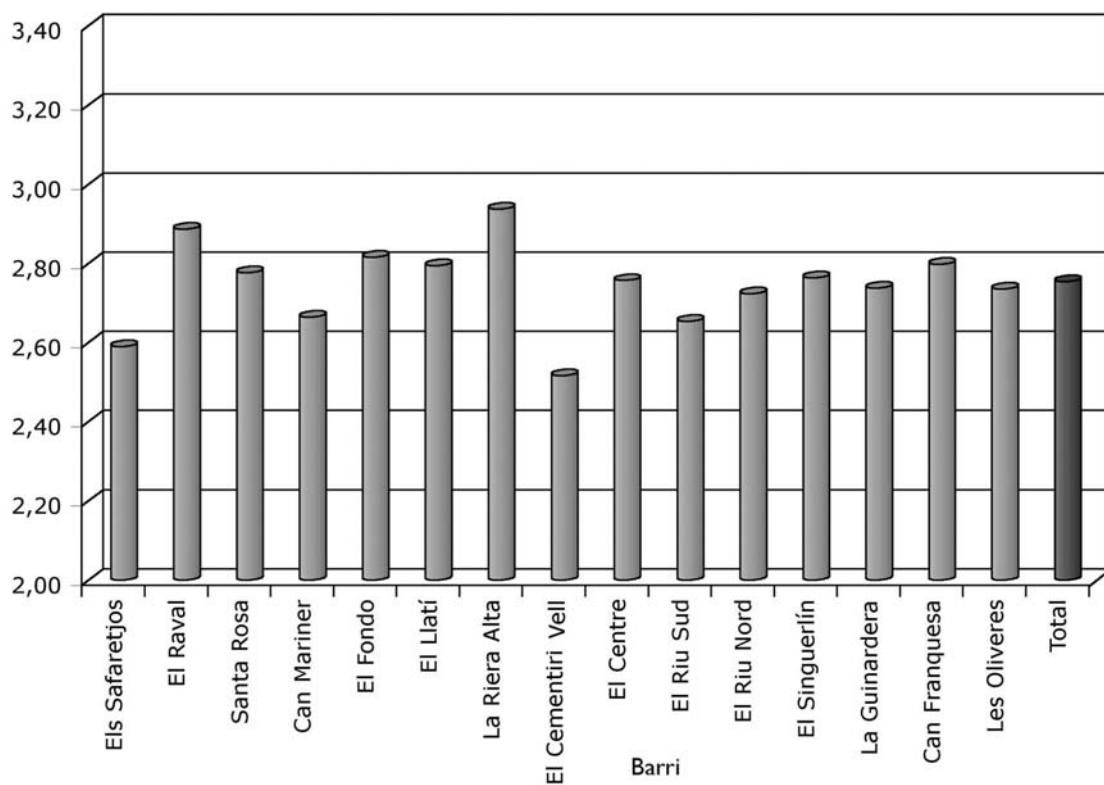
I.T21 Famílies segons la grandària. Barris

| Districte | Nombre de persones a la família | | | | | | | | | | Grandària | |
|-------------------|---------------------------------|---------------|---------------|--------------|--------------|------------|------------|------------|------------|------------|---------------|-------------|
| | 1 | 2 | 3 | 4 | 5 | 6 | 7 | 8 | 9 | 10 o més | Total | mitjana |
| Els Safarejtos | 106 | 130 | 97 | 69 | 19 | 5 | 3 | 1 | 3 | 1 | 434 | 2,59 |
| El Raval | 608 | 710 | 658 | 495 | 175 | 65 | 40 | 23 | 22 | 23 | 2.819 | 2,89 |
| Santa Rosa | 1.006 | 1.501 | 1.192 | 853 | 254 | 100 | 61 | 38 | 26 | 19 | 5.050 | 2,78 |
| Can Mariner | 672 | 881 | 622 | 431 | 132 | 54 | 29 | 26 | 10 | 14 | 2.871 | 2,66 |
| El Fondo | 1.319 | 1.654 | 1.269 | 836 | 271 | 147 | 96 | 70 | 62 | 44 | 5.768 | 2,82 |
| El Llatí | 650 | 1.028 | 872 | 679 | 193 | 64 | 22 | 24 | 8 | 12 | 3.552 | 2,79 |
| La Riera Alta | 101 | 166 | 154 | 127 | 51 | 7 | 4 | 6 | 2 | 3 | 621 | 2,94 |
| El Cementiri Vell | 133 | 162 | 112 | 87 | 17 | 8 | 6 | 1 | - | - | 526 | 2,52 |
| El Centre | 1.114 | 1.722 | 1.365 | 1.067 | 304 | 114 | 50 | 34 | 11 | 13 | 5.794 | 2,76 |
| El Riu Sud | 1.145 | 1.820 | 1.364 | 1.057 | 226 | 66 | 29 | 28 | 11 | 13 | 5.759 | 2,65 |
| El Riu Nord | 519 | 843 | 759 | 571 | 134 | 34 | 11 | 12 | 3 | 3 | 2.889 | 2,72 |
| El Singuerlín | 830 | 1.322 | 1.140 | 936 | 251 | 48 | 32 | 12 | 7 | 12 | 4.590 | 2,76 |
| La Guinardera | 142 | 246 | 202 | 184 | 37 | 8 | 1 | 3 | 1 | 1 | 825 | 2,74 |
| Can Franquesa | 78 | 145 | 116 | 98 | 31 | 8 | 2 | - | 2 | - | 480 | 2,80 |
| Les Oliveres | 233 | 356 | 305 | 221 | 57 | 27 | 9 | 3 | 2 | 3 | 1.216 | 2,74 |
| Total | 8.656 | 12.686 | 10.227 | 7.711 | 2.152 | 755 | 395 | 281 | 170 | 161 | 43.194 | 2,75 |

Font: Padró municipal d'habitants, 2004



I.G9 Nombre mitjà de persones per família. Barris



I.T22 Personas que viuen soles. Districtes

| Districte | Total |
|--------------|--------------|
| I | 1.613 |
| II | 1.072 |
| III | 1.243 |
| IV | 1.596 |
| V | 1.639 |
| VI | 1.294 |
| Sense dades | 37 |
| Total | 8.494 |

Font: Padró municipal d'habitants, 2004



I.T23 Persones que viuen soles. Barris

| Districte | Total |
|-------------------|--------------|
| Els Safaretjos | 106 |
| El Raval | 608 |
| Santa Rosa | 1.006 |
| Can Mariner | 672 |
| El Fondo | 1.319 |
| El Llatí | 650 |
| La Riera Alta | 101 |
| El Cementiri Vell | 133 |
| El Centre | 1.114 |
| El Riu Sud | 1.145 |
| El Riu Nord | 519 |
| El Singuerlín | 830 |
| La Guinardera | 142 |
| Can Franquesa | 78 |
| Les Oliveres | 233 |
| Total | 8.656 |

Font: Padró municipal d'habitants, 2004

I.T24 Nombre de llars. Districtes

| Districte | Nre. de llars |
|--------------|---------------|
| I | 7.978 |
| II | 5.676 |
| III | 7.015 |
| IV | 8.449 |
| V | 8.125 |
| VI | 5.777 |
| Sense dades | 174 |
| Total | 43.194 |

Font: Padró municipal d'habitants, 2004

I.T25 Nombre de llars. Barris

| Barri | Nre. de llars |
|-------------------|---------------|
| Els Safaretjos | 434 |
| El Raval | 2.819 |
| Santa Rosa | 5.050 |
| Can Mariner | 2.871 |
| El Fondo | 5.768 |
| El Llatí | 3.552 |
| La Riera Alta | 621 |
| El Cementiri Vell | 526 |
| El Centre | 5.794 |
| El Riu Sud | 5.759 |
| El Riu Nord | 2.889 |
| El Singuerlín | 4.590 |
| La Guinardera | 825 |
| Can Franquesa | 480 |
| Les Oliveres | 1.216 |
| Total | 43.194 |

Font: Padró municipal d'habitants, 2004

